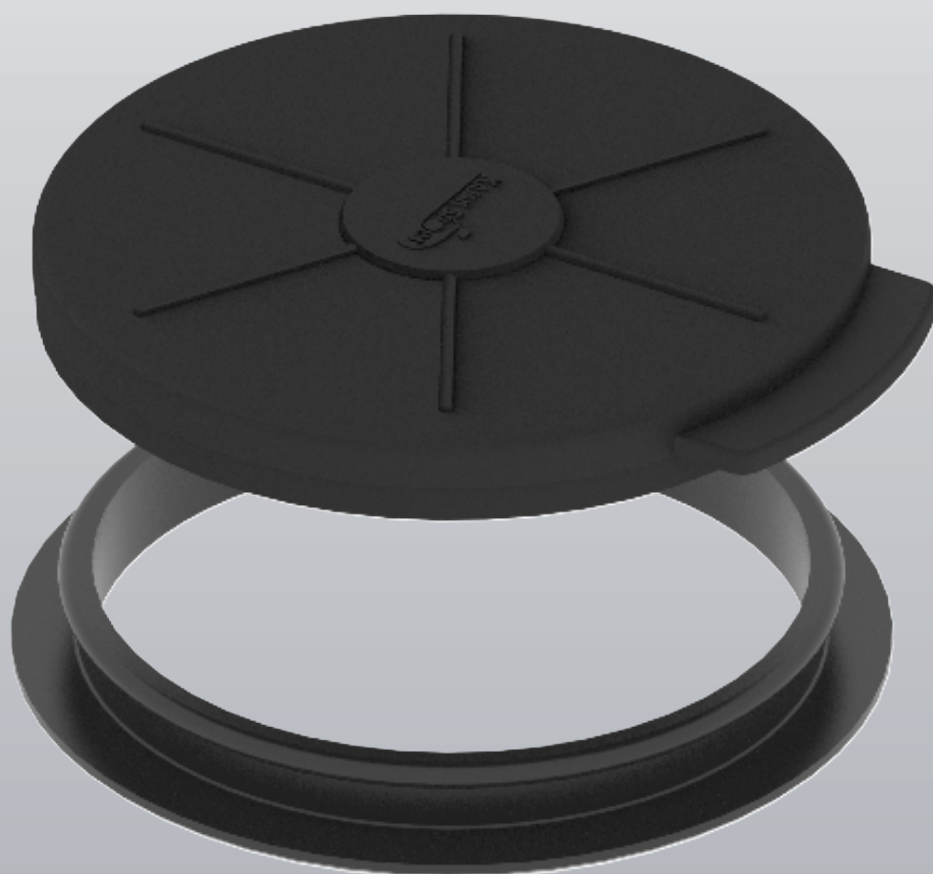


# CHOOSING THE REPLACEMENT COVER

HOW TO FIND CORRECT SIZE OF REPLACEMENT COVER



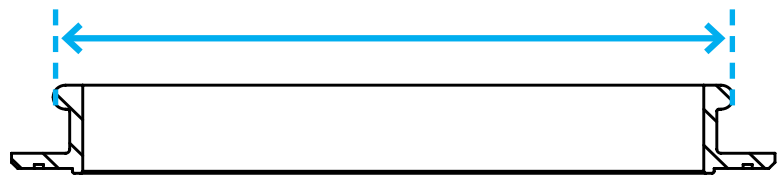
# HOW TO FIND CORRECT SIZE OF REPLACEMENT COVER

## Measure the hatch rim from the kayak

To determinate and ensure the correct hatch size, measure the hatch rim of your kayak.

Hatch rim can be separately made component like it is in the most of the composite kayaks or it can be integrated piece of a kayak deck like it is in the most of the rotomoulded plastic kayaks. The hatch rim outer dimension should be very close to the nominal dimension in order to fit, work and seal well with the hatch cover. Therefore the hatch rim outer dimension is the best and unchangeable dimension to determinate the correct hatch size.

Nominal outer dimension



### KS Round Hatch 10 Rim

### Nominal outer dimension



10 hatch rim      113 mm

### KS Round Hatch 10 Cover

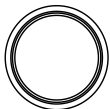
### Top Outer Dimension



Rubber cover      119 mm

### KS Round Hatch 15 Rim

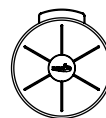
### Outer Diameter (as instructed)



15 hatch rim      164 mm

### KS Round Hatch 15 Cover

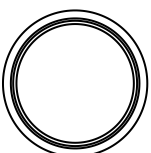
### Top Outer Dimension



Rubber cover      170 mm  
Click-on cover      170 mm  
LRC covers      170 mm

### KS Round Hatch 20 Rim

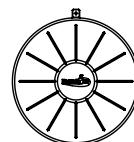
### Outer Diameter (as instructed)



20 hatch rim      209 mm

### KS Round Hatch 20 Cover

### Top Outer Dimension

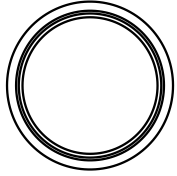


Rubber cover      220 mm  
Click-on cover      215 mm  
LRC covers      220 mm

GUIDE TO CHOOSE CORRECT REPLACEMENT COVER

KS Round Hatch 24 Rim

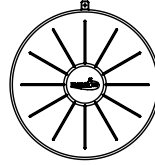
Outer Diameter



24 hatch rim	256 mm
--------------	--------

KS Round Hatch 24 Cover

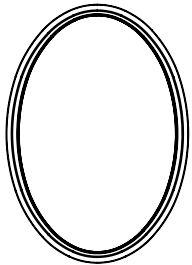
Top Outer Dimension



Rubber cover	270 mm
Click-on cover	266 mm
LRC covers	270 mm

KS Oval Hatch 42/30 Rim

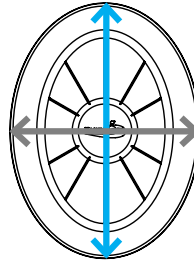
Outer Diameter



Hatch rim	L: 449 mm
	W: 328 mm

KS Oval Hatch 42/30 Cover

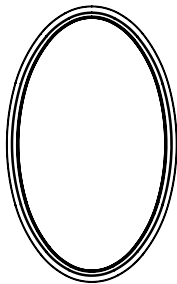
Top Outer Dimension



Rubber cover	L: 461 mm
	W: 344 mm
Click-on cover	L: 452 mm
	W: 328 mm
LRC covers	L: 460 mm
	W: 340 mm

KS Oval Hatch 44/26 Rim

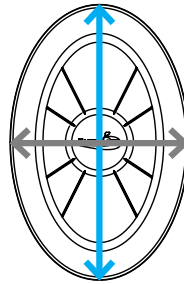
Outer Diameter



Hatch rim	L: 466 mm
	W: 283 mm

KS Oval Hatch 44/26 Cover

Top Outer Dimension



Rubber cover	L: 478 mm
	W: 290 mm
Click-on cover	L: 470 mm
	W: 285 mm
LRC covers	L: 478 mm
	W: 290 mm

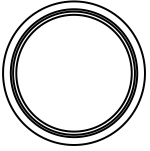
## GUIDE TO CHOOSE CORRECT REPLACEMENT COVER

**Valley Round Standard**

**Outer Diameter**

Valley rim 202 mm

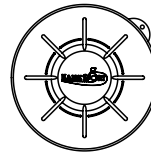
The Rim is not available



**KS (VCP) Round Hatch 19,5 Cover**

**Top Outer Dimension**

VCP 19,5 214 mm

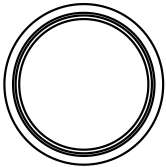


**Valley Round Standard**

**Outer Diameter**

Valley rim 268 mm

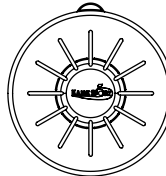
The Rim is not available



**KS (VCP) Round Hatch 25 Cover**

**Top Outer Dimension**

VCP 25 275 mm

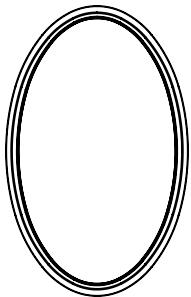


**Valley Oval Standard**

**Outer Diameter**

Valley rim L: 439 mm  
W: 254 mm

The Rim is not available



**KS (VCP) Oval Hatch 41/22 Cover**

**Top Outer Dimension**

VCP 41/22 L: 454 mm  
W: 274 mm

